

SMART Package®

Acellent Technologies, Inc. provides complete Structural Health Monitoring (SHM) solutions with our innovative technology. We have designed a "SMART Package" specifically for engineers, researchers and students at research institutes, R&D laboratories in companies and universities, who are working on piezoelectric-based active sensing & diagnostic systems.

SMART Package:

Provides –

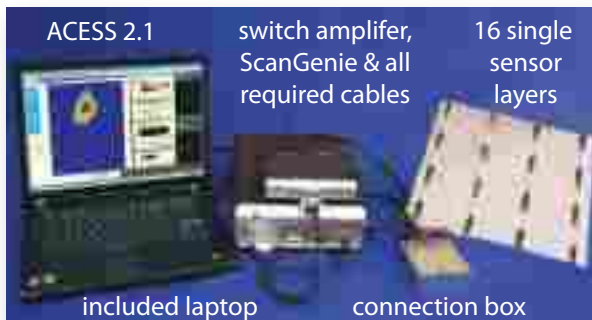
- Complete integrated system
- Cost-effective solution to solve your SHM needs
- Compact & light-weight system for easy field deployment
- Reduced system cost as compared to purchasing individual components

Allows –

- Automated signal processing
- Built-in tools for signal generation & data-acquisition
- Pre-connected sensor network
- Autonomous damage detection capability

Monitors –

- Laboratory-sized structures
- Large structural components (aircraft wings, helicopter blades, wind turbines etc.)
- Bolted, riveted or welded joints
- Different material types (composites & metals)

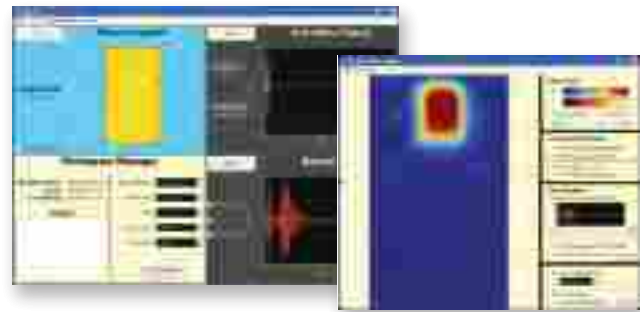


SMART Package Includes -

Components	Product	Description
Sensor	SMART Layer®	16 single sensor layers or two strips of 8 sensors each
Hardware	ScanGenie®	Includes switch amplifier, cables & connection box
Software	ACCESS®	Version 2.1

Features of ACCESS Software

- Embedded tools for data analysis
- Diagnostic imaging tools
- Data can be exported in multiple formats (such as Matlab, Excel and Text.)
- Advanced signal investigation capability
- Data retrieval for future analysis



Features of the ScanGenie



- Multi-channel actuation & sensing - "64 channels"
- Two active scan modes: through transmission and pulse-echo
- Data acquisition: up to 48MS/s in dual channel mode, 12-bit resolution
- Transmission signal: 10 kHz to 700 kHz, up to 150V pk-pk
- Adjustable band-pass filter and gain amplifier

Features of the Sensors

- Ease & accuracy of installation
- Durability & reliability under variable environments
- Adaptability to any shape



SMART Layer Strip or Single Sensor Layer

About: Acellent Technologies, Inc.

Founded:

Acellent Technologies, Inc. was founded in 1999 to develop and commercialize *structural health monitoring* (SHM) technology emerging from Stanford University's research labs. Acellent is located in the heart of Silicon Valley, with hardware and software R & D, manufacturing, administrative, sales and marketing in-house.

Markets:

Acellent's SMART technology can be applied to many industries: aerospace, automotive, civil structures, energy and utility companies, defense, space and transportation.

Services:

Often a unique situation requires a custom solution. Acellent works with customers to customize SHM systems to meet all monitoring and diagnosis requirements.

Expertise:

Our knowledgeable staff has more than 90 years combined experience in the SHM field. With our expertise in structural design and algorithm programming, we provide detailed easy-to-read diagnostic results to check the integrity of a structure

Quality:

Acellent manufactures all of the hardware and sensors and we write our own software modules. This ensures the quality of our products and gives our customers reliable high-quality systems.

Support:

Acellent provides our customers with comprehensive training for sensor network installation and instructions for using the system. We work closely with our customers to ensure they have a complete understanding of our systems and their benefits.



835 Stewart Drive,
Sunnyvale, CA 94085
www.acellent.com



Tel: 408-745-1188
Fax: 408-745-6168
sales@acellent.com